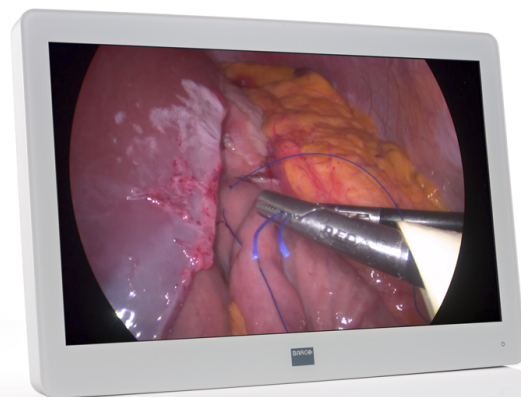


# MDSC-2226

## 26-inch full HD surgical display



Barco's MDSC-2226 is a 26-inch near-patient surgical display with LED backlight. Purpose-built for the operating room, the MDSC-2226 offers an easy-clean design, smart mechanics and the most detailed images in the procedure room today.

### Ease of mind

#### *Calibrated, artifact-free images*

The display's high brightness, high contrast and full HD resolution provide surgeons with excellent depth perception and the most accurate images. The MDSC-2226 presents images with unrivaled color and grayscale accuracy and with near-zero latency, making it perfectly suited for use with today's state-of-the-art endoscopy camera systems. Thanks to its high-bright LED backlight with light output stabilization, the surgical display also ensures a long lifetime and image consistency across displays.

#### *Multi-source, multi-display imaging*

With its broad input connectivity, the MDSC-2226 offers flexible multi-modality imaging (PiP & PaP) in new integrated operating rooms. The 26-inch display is also the first surgical display offering integrated functionality (optional) for use with Barco's Nexxis for OR solution, ensuring smooth distribution of uncompressed video and data over the IP network without delay.

**BARCO**

Visibly yours

# MDSC-2226

## 26-inch full HD surgical display

### **Ease of installation**

The MDSC-2226 comes with a smart cable management system that hides the cables for a clutter-free set-up. Its lightweight design allows easy mounting on surgical booms and spring arms. Available in three models, this surgical display also features a host of connectivity options and remote control.

### **Ease of use**

Barco's MDSC-2226 allows easy cleaning and disinfection thanks to its smooth surface, splash-proof housing (front protection level IPX5), and protective screen cover. The fanless design avoids the spread of contaminants.

<b>Product specifications</b>	<b>MDSC-2226</b>
<b>Screen technology</b>	TFT AM LCD (LED backlight)
<b>Active screen size (diagonal)</b>	661 mm (26")
<b>Active screen size (H x V)</b>	576 x 324 mm (22.7" x 12.8")
<b>Aspect Ratio</b>	16:9
<b>Resolution</b>	2MP (1920 x 1080)
<b>Pixel pitch</b>	0.3 mm
<b>Color imaging</b>	Yes
<b>Color support</b>	> 1 billion
<b>Color gamut</b>	100% ITU-R BT.709 HD standard
<b>Viewing angle</b>	178°
<b>Maximum luminance</b>	450 cd/m² (typ.)
<b>Contrast ratio</b>	1400:1
<b>Housing color</b>	White
<b>Video inputs</b>	DVI-I Single link (with HDMI support) RGBS / YPbPr (4xBNC) S-video (4-pin Mini DIN) Composite video (1xBNC) 3G-SDI (1xBNC)* VGA (on DVI-I) DisplayPort (VESA std 1.1a)  Options: DDI (Dual Digital Input): additional DVI-D and 3G-SDI input* Nexxis MNA-120 decoder (for uncompressed video-over-IP)  *Not included in combination with Nexxis MNA-120 decoder
<b>Video outputs</b>	DVI-D x1 S-video (4-pin Mini DIN) Composite video (1xBNC) 3G-SDI (1xBNC)  Option: DDI (Dual Digital Input) : additional 3G-SDI output
<b>Remote Control</b>	RS-232 (D-sub p-pin)
<b>Power requirements (nominal)</b>	100-250 V / 47-63 Hz auto-switch 120W max
<b>Power management</b>	DVI-DMPM states supported Power On state Active-Off state
<b>OSD languages</b>	English, French, German, Spanish, Italian
<b>Dimensions w/o stand (W x H x D)</b>	633 x 411 x 90 mm (24.9 x 16.2 x 3.5")
<b>Net weight w/o stand</b>	9.5 kg (20.9 lbs) without power supply
<b>Net weight packaged w/o stand</b>	12.5 kg (27.6 lbs)
<b>Mounting standard</b>	VESA (100 mm)
<b>Screen protection</b>	Protective, non-reflective PMMA cover
<b>Recommended modalities</b>	Endoscopy, US, X-ray
<b>Regulation Compliance</b>	IEC60601 3rd Edition Approvals/Marking: CE, C-UL-US, DEMKO Safety (Medical equipment): IEC60601-1, UL60601-1, CAN/CSA C22.2 No. 60601-1-08 Electromagnetic compatibility: EMC Medical EMC standards: IEC60601-1-2, EN55011 /CISPR 11, FCC CFR47 part 15 & 18/Class B Protection level: IP21 (with Protection screen) / Front face: IPX5 protection level Green requirements: ROHS2, REACH, WEEE compliant
<b>Supplied accessories</b>	User Manual Mains cables: EU (CEBEC/KEMA) & US (Hospital grade UL) External power supply

<b>Product specifications</b>	<b>MDSC-2226</b>
<b>Optional accessories</b>	Barco MDSC surgical medical LCD display desk stand
<b>Warranty</b>	3 years